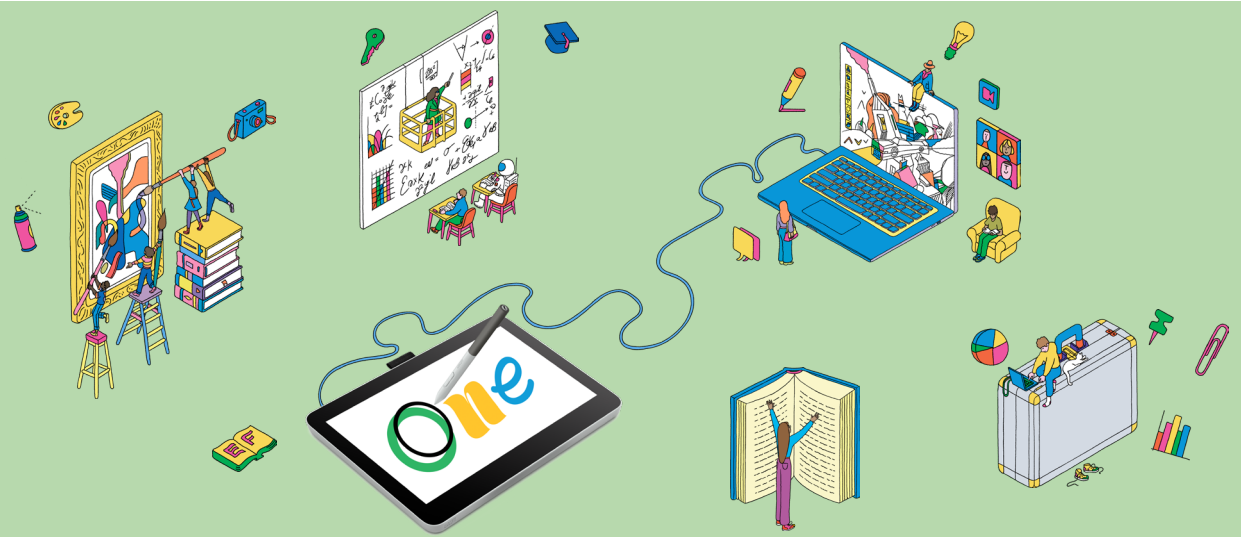


Wacom® One

See where it takes you

Explore a bold new world of possibilities with Wacom One. Our **pen display** gives you the freedom to digitally draw, paint, edit images, take notes and collaborate. Choose from our exceptional lineup of pen display models, designed to offer you the unparalleled experience of creating directly on a high-resolution screen using a precise pen. Witness your artistic creations come alive with breathtaking accuracy and detail, as you seamlessly translate your imagination onto the screen before you. Plus, bonus software, tutorials and exciting community experience are included. So there's no limit to what you can do.



Specifications



Wacom One 13 touch
Pen display



Wacom One 12
Pen display

| | | |
|---------------------------|---|------------------------------|
| Screen size | 13.3-inch / 33.8 cm | 11.6-inch / 29.5 cm |
| Display resolution | 1920 x 1080 pixels | |
| Touch | Yes | No |
| Surface | No parallax, Anti-glare & Anti-fingerprint | |
| Pen technology | Electromagnetic resonance technology (EMR), compatible with third party pens (LAMY, Staedtler, ...) | |
| Pen type | Tilt- & pressure-sensitive, cordless, battery-free | |
| Pen buttons | 2 x (individual button assignment) | |
| Connection | 2 x USB Type-C (USB hub function) | |
| Dimensions L x W x H (mm) | 336 x 222 x 12 mm (13.3-inch) | 299 x 190 x 11mm (11.6-inch) |
| Product weight (kg) | 900 grams (13.3-inch) | 700 grams (11.6-inch) |

Strengths of pen displays

Draw directly on screen

Like drawing with pen on paper

Easy connection with your computer or smartphone

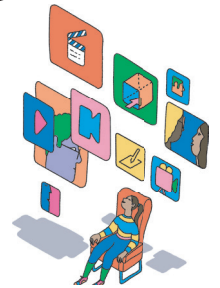
Quick set-up allows one to get started quickly and easily

Draw & communicate on a larger screen

Extend the display of your Android phone

Ideal for both content creation & consumption

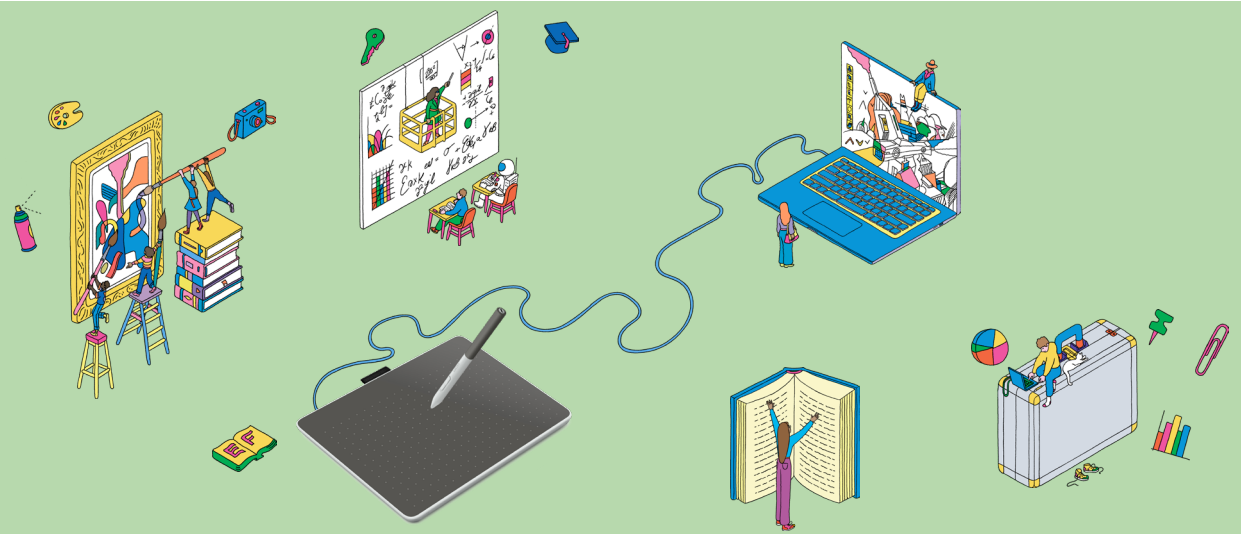
Draw, browse the web, use Social Media and much more



Wacom® One

See where it takes you

Wacom One is more than just the ideal **pen tablet** to express yourself in new ways. Like to digitally draw, paint, edit images, take notes, or collaborate? Select one of our two pen tablet models to experience the seamless precision of the pen as it glides across the ultra-responsive tablet, effortlessly bringing your artistic visions to life on your screen. Bonus software, tutorials and exciting community experiences included. There is no limit to what you can do.



Specifications



Wacom One M
Pen tablet



Wacom One S
Pen tablet

| | | |
|---------------------------|---|--|
| Active area size | 8.5 x 5.3-inch / 216 x 135 mm (similar to A5) | 6.0 x 3.7-inch / 152 x 95 mm (similar to A6) |
| Surface | High friction for pen-on-paper feeling | |
| Pen technology | Electromagnetic resonance technology (EMR), compatible with third party pens (LAMY, Staedtler, ...) | |
| Pen type | Pressure-sensitive, cordless, battery-free | |
| Pen Buttons | 2 x (individual button assignment) | |
| Connectors | 1 x USB Type-C, Bluetooth 5.1 | |
| Dimensions L x W x H (mm) | 252 x 181 x 8 mm | 188 x 141 x 8 mm |
| Product weight (kg) | 350 grams | 200 grams |

Strengths of pen tablets

Super thin & light for mobile use

Perfect for traveling as it easily fits in a bag, or on a desk

Easy connection with your computer or smartphone

Quick set-up allows one to get started quickly and easily

Ergonomic alternative to a computer mouse

Helps prevent Repetitive Strain Injury (RSI)

Entry-level devices to enjoy premium pen experience

Wacom's best value proposition

