



EMA[®] for SAP systems

**Clever Data Management and Maximum
Data Security in the SAP Environment**



Challenge: Data Management in SAP Environments

A large part of the world's business is conducted using SAP solutions. Applications used for Enterprise Resource Planning (ERP), warehousing, human resources, production, etc., produce large quantities of legally relevant documents, data and information worldwide and across all industries. All this information must not only be stored securely in accordance with legal requirements, but also decreases the performance of existing SAP systems. To solve this problem, a DMS solution with an attached archive is traditionally used. However, usually only a very small area is actually used for archiving in SAP. Cost and maintenance effort is therefore usually out of proportion to any actual benefit.

SAP® Certified
Integration with SAP NetWeaver®

EMA® and SAP Solutions: A Strong Team!

EMA® provides an all-in-one solution for intelligent, legally compliant, and affordable data management with little administrative effort. As an integrated solution that implements all requirements of a modern SAP information management and archiving solution, EMA® offers a built-in SAP Content Server, a certified SAP ArchiveLink interface, and legally compliant data storage.

Metadata Synchronization

EMA® supports quick and cost-effective addition of metadata to documents. Transaction numbers, document numbers, and other metadata required for business processes can augment individual documents easily. This enables using SAP documents outside the SAP environment for integrated information management.

Data Capture and Document Capturing

You can automate OCR-based capturing processes and all standard barcode scenarios in combination with EMA® for Scan. EMA® also supports the standard SAP mechanisms for “late” and “early” archiving with barcodes. There are also no limits to interfacing directly with workflows in SAP environments.

Low Maintenance and Administration

The majority of current IT systems require intensive – sometimes even daily – monitoring and maintenance by administrators. Databases, servers and storage in particular require a certain amount of daily housekeeping in order to operate properly. Daily backups often require exact coordination with the SAP backup process in order to keep everything synchronized with the underlying databases and storage pools.

As a fully integrated system, EMA® offers an elegant solution for this large administrative effort and combines all facets of data management and archiving in the SAP environment within one solution. EMA® directly integrates with your SAP base system by means of a few standardized interfaces, and ensures smooth processes without requiring additional middleware.

Data Security and Storage Management

All data is digitally signed by EMA®, stored in a tamper-proof manner, and remains inaccessible to cyber-attackers at all times. In particular, compliance with legal requirements such as the EU-GDPR can be implemented with EMA®. With the integrated storage manager, the data can also be distributed across various storage types and locations. We recommend the VSTOR® storage series for this purpose, as it is perfectly matched to EMA®.

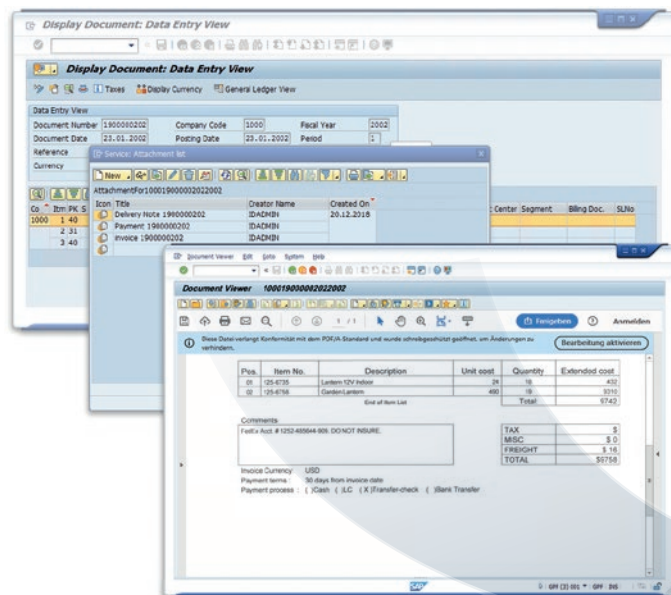
But also all other storage and WORM media available on the market are supported. With ARTEC's own WORM techniques, any conventional memory can also be easily transformed into a WORM medium. With the sophisticated security concept of EMA®, data can be reliably protected against unauthorized access - whether in-house or in the cloud.

Migrating Existing Archives

Experience has shown that SAP archive migration is very challenging. Traditionally, legacy data must first be exported from the existing system in order to import it into a new system; a process that is usually associated with unproductive downtimes. EMA® uses a different approach and enables true online migration during ongoing business operations.

EMA® connects to both SAP as a repository with its own content server and also to an existing third-party repository (or archive) using a process that only takes a few minutes to set up. After the connection is established, all incoming documents are archived directly by EMA®.

Data still stored on the previous third-party archive is automatically transferred to EMA® and then delivered to SAP transparently. EMA® also performs a gradual transfer of previously archived data in the background. This allows for an online migration without affecting active business processes.

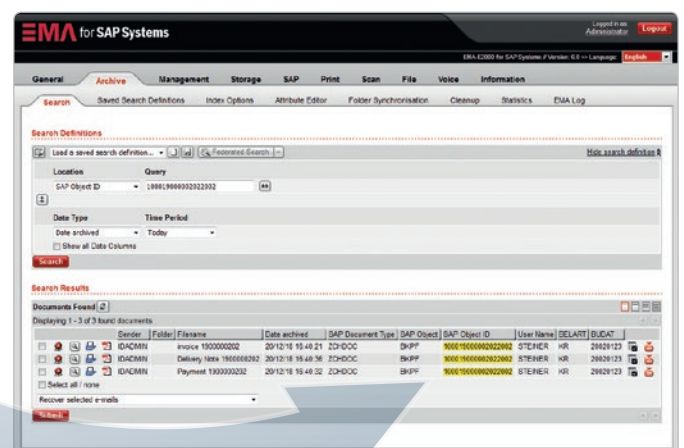


From Big Data to Smart Data

In addition to the management of SAP documents, EMA® also offers the ability to include other sources of company data. EMA® can store this data in a structured manner and make it available in SAP processes. This includes, for example, unstructured data like e-mail messages, files from file servers, scanned paper documents, printouts, and even voice recordings. With EMA®, all of this data can be processed using a single solution, stored securely, archived in a legally compliant manner, and used efficiently. The result is a central information management system based on a single solution. “Big Data” can finally become “Smart Data” in this way.

Preservation and Delivery of Evidence

Legal disputes and data protection are making the preservation of evidence increasingly important for organizations. Until now, data and information needed for these purposes had to be collected manually from different sources. This was often an extremely difficult task, requiring a lot of time and dedication. With EMA® as a central data management system, the necessary searches across various data sources – also encompassing SAP data – can be carried out quickly and efficiently. Everything is accessible directly across several locations using the Federated Search feature.



EMA® stores all relevant documents relating to SAP business processes in a legally compliant manner. Data is available at any time with a single mouse click.

Advantages of EMA® at a Glance

- Comprehensive data management and maximum data security in SAP environments
- Certified Integration with SAP NetWeaver®
- Easy setup and integration
- Secure and legally compliant archiving
- Low maintenance requirements
- Online migration of existing old archives during operation
- Add custom metadata to documents
- Supports barcode scenarios for SAP archiving
- A great solution for eDiscovery
- Available on-premise or in the cloud

ARTEC IT Solutions is a leading manufacturer of comprehensive information management solutions. The products cover the complete life cycle of all relevant company data, from centralized management, efficient use, and secure storage to legally compliant archiving. ARTEC's flagship product is EMA®, a modular information management system. ARTEC also offers the high-performance VSTOR® mass storage system and firegate VPN with ARTEC Trusted Computing technology for secure connections to cloud services.

Founded in 1995, ARTEC focuses on the development of specialized software, hardware, and integrated appliance solutions that optimize business processes. ARTEC solutions are characterized by maximum security, simple implementation, and cost effectiveness.



EMEA

ARTEC IT Solutions AG
Robert-Bosch-Str. 38
61184 Karben, Germany
Phone: +49 - 6039 - 9154 - 0
E-mail: info@artec-it.de
Internet: www.artec-it.de

AMERICA

ARTEC IT Solutions USA
1600 Parkwood Circle
Atlanta, Georgia 30339, USA
Phone: +1 - 855 - 462 - 7832
E-mail: info@artec-it.com
Internet: www.artec-it.com

ASIA PACIFIC

ARTEC IT Solutions AP
#1003 U-Top Tech Valley, 7, Beobwon-ro
6-gil, Songpa-gu, Seoul 05855, Korea
Phone: +82 - 2 - 515 - 3349
E-mail: info-ap@artec-it.com
Internet: www.artec-it.com

Your ARTEC Sales Partner:

Turning Data Into Information